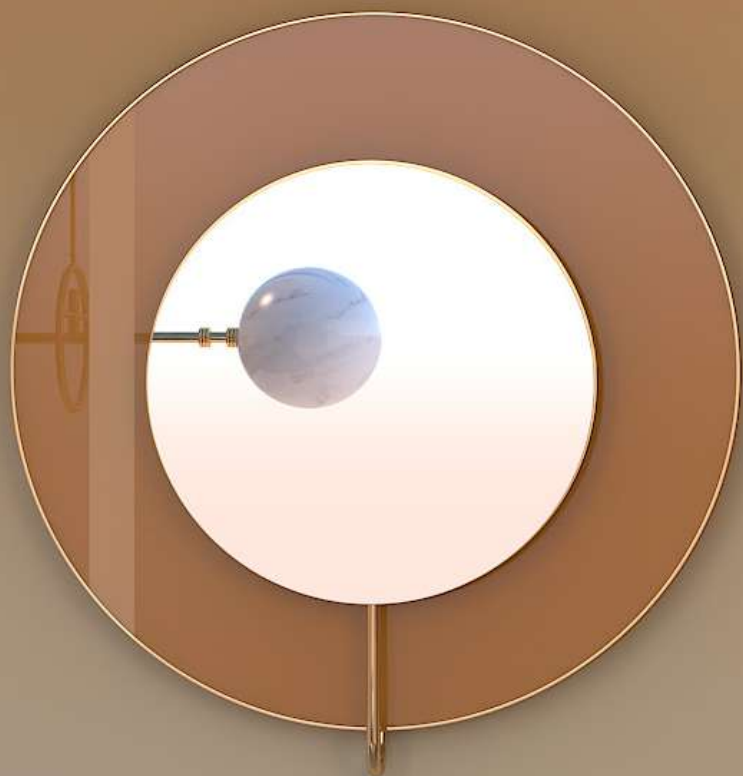


M
C

MEZZO
COLLECTION







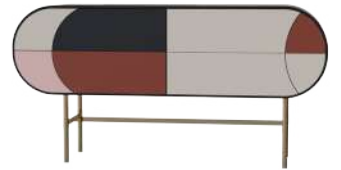
BAILEY SIDEBOARD
Page 1-2



MORYSON SIDEBOARD
Page 3-4



MORYSON II SIDEBOARD
Page 5-6



RETRO MORYSON SIDEBOARD
Page 7-8



GORDON DINING TABLE
Page 9-10



GARRET DINING TABLE
Page 11-12



CHESS GAME TABLE
Page 13-14



ERVIN BAR CHAIR
Page 15-16



GILMORE BAR CHAIR
Page 17-18



MORIS BAR CHAIR
Page 19-20



ELLIS BAR CHAIR
Page 21-22



ASHBY BAR CHAIR
Page 23-24



BERRY BAR CHAIR
Page 25-26



BETSY BAR CHAIR
Page 27-28



ASHBY DINING CHAIR
Page 29-30



CRAWFORD DINING CHAIR
Page 31-32



JARMAN DINING CHAIR
Page 33-34



MILLER ARMCHAIR
Page 35-36



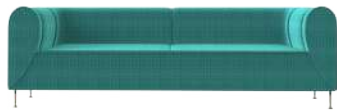
HANDY ARMCHAIR
Page 37-38



ROLLINS SINGLE SOFA
Page 39-40



ROLLINS SOFA
Page 41-42



BARLOW SOFA
Page 43-44



MILLER SOFA
Page 45-46



MURRAY BOOKCASE
Page 47-48



DASH PENDANT
Page 49-50



HARPER PENDANT
Page 51-52



GAYLE PENDANT
Page 53-54



LOCKETT SUSPENSION
Page 55-56



OSBY SUSPENSION
Page 57-58



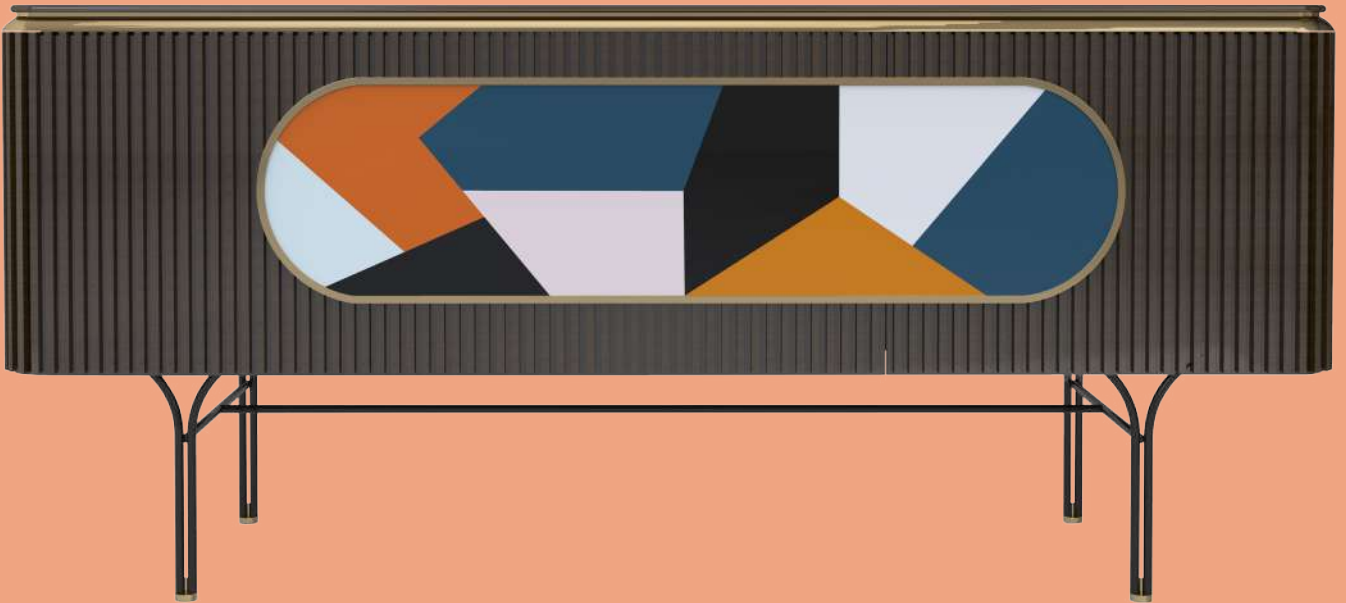
AYLER SUSPENSION
Page 59-60



AYLER II SUSPENSION
Page 61-62



AYLER Wall
Page 63-64



Bailey

Sideboard

Since it's very versatile, the Bailey Sideboard it can be used as a drinks cabinet and be placed in a living room. Produced in classic materials such as solid walnut wood with additional brass features that gives a sense of subtlety. The mix of lacquered colors on the front is a modern approach to its design perfect to fulfill any design space.

DIMENSIONS:

W: 180 cm | 70,86" D: 48 cm | 18,89" H: 85 cm | 33,46"

MATERIALS:

Solid Walnut Wood, Lacquered Wood and Polished Brass.

WEIGHT:

150 kg | 330,69 lbs



Morysson

Sideboard

The Morysson Sideboard is a retro chic piece of furniture inspired by the 60's design legacy. With curved lines combined with a polished brass rib, this accent sideboard shows all its sensible presence delicately balanced mid-century elements and a contemporary design.

DIMENSIONS:

W: 180 cm | 70,86" D: 47 cm | 18,50" H: 90 cm | 35,43"

MATERIALS:

Walnut Venner and Polished Brass.

WEIGHT:

180 kg | 396,83 lbs



Morysson II

Sideboard

The retro-chic design from the Moryson Sideboard was the pure inspirations that bring the 60's design legacy reborned in this new concept. With six drawers finely accentuated with stylish handlers that seems to give us the illusion of a safe box, this sideboard is the best choice for all mid-century admirers.

DIMENSIONS:

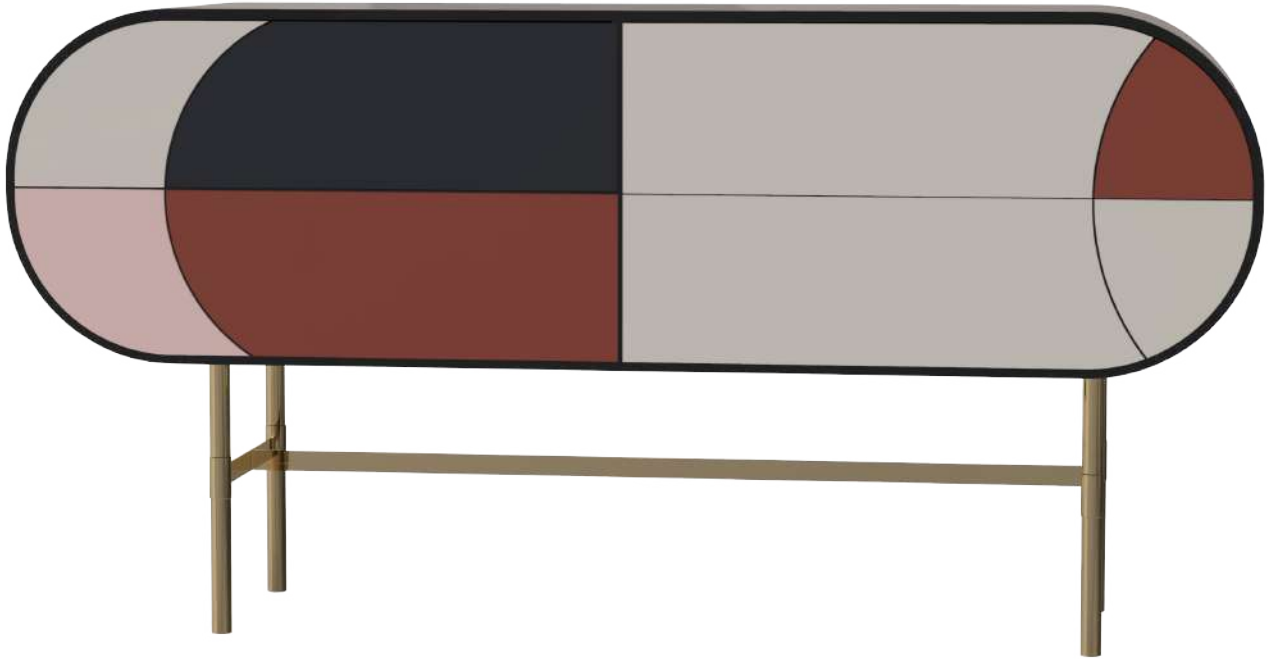
W: 180 cm | 70,86" D: 50 cm | 19,68" H: 90 cm | 35,43"

MATERIALS:

Walnut Venner and Polished Brass.

WEIGHT:

180 kg | 396,83 lbs



Retro Morysson Sideboard

With a vintage style, the Retro Moryson Sideboard rises as a recreation from the Moryson Sideboard. Inspired by the mid-century retro design, this distinctive piece promises to give a stylish touch to any living room. Using a tubular polished brass frame structure as support, harmoniously blended with lacquered trendy colors.

DIMENSIONS:

W: 180 cm | 70,86" D: 41 cm | 16,14" H: 80 cm | 31,49"

MATERIALS:

Walnut Venner and Polished Brass.

WEIGHT:

140 kg | 308,64 lbs



Gordon

Dining Table

Ervin Bar Chair has a deluxe look perfect to fit in any bar enjoying a cocktail. It features a round shape on the back upholstered in velvet, combined with black lacquered legs accented by polished brass details like a footrest.

DIMENSIONS:

W: 49 cm | 19,29" D: 41 cm | 16,14" H: 100 cm | 39,37"

MATERIALS:

Lacquered Wood, Velvet Fabric and Polished Brass.

WEIGHT:

10 kg | 22,04 lbs



Garret

Dining Table

Inspired in the saxophonist Kenny Garrett, Garret Dining table will be an eye-catcher on any dining room. Made in marble with brass details this modern table will bring statement and uniqueness to any dining room

DIMENSIONS:

W: 220 cm | 86,61" D: 100 cm | 39,37" H: 76 cm | 29,92"

MATERIALS:

Marble and Polished Brass.

WEIGHT:

350 kg | 330,69 lbs



Chess Game Table

The elegant and contemporary Chess game table is inspired in the king of gamblers, Archie Karas. Made in walnut wood veneer with brass and marble details, this table will delight all the board games lovers

DIMENSIONS:

W: 80 cm | 31,49" D: 80 cm | 31,49" H: 78 cm | 30,70"

MATERIALS:

Carrara Marble, Lacquered Wood and Polished Brass

WEIGHT:

80 kg | 176,37 lbs



Ervin

Bar Chair

Ervin Bar Chair has a deluxe look perfect to fit in any bar enjoying a cocktail. It features a round shape on the back upholstered in velvet, combined with black lacquered legs accented by polished brass details like a footrest.

DIMENSIONS:

W: 49 cm | 19,29" D: 41 cm | 16,14" H: 100 cm | 39,37"

Seat Height: 85 cm | 33,46"

MATERIALS:

Lacquered Wood, Velvet Fabric and Polished Brass.

WEIGHT:

10 kg | 22,04 lbs

Also available in counter stool size.



Gilmore

Bar Chair

Gilmore Bar Chair was designed to bring a luxury and mid-century touch to any bar. This vintage bar chair is supported by tall glossy back lacquered legs with brass details, perfect to bring glamour to any ambience.

DIMENSIONS:

Diam. 45 cm | 17,71" H: 105 cm | 41,33"

Seat Height: 85 cm | 33,46"

MATERIALS:

Lacquered Wood, Velvet Fabric and Polished Brass.

WEIGHT:

8 kg | 17,63 lbs

Also available in counter stool size.



Moris

Bar Chair

The sculptured Morris Bar Chair is supported by tapered tall framed legs, finished by glossy black lacquered legs. All this vintage refinement is accomplished through all the polished brass details from the bottom to the top and finely upholstered with brown leather.

DIMENSIONS:

W: 50 cm | 19,68" D: 56 cm | 22,04" H: 120 cm | 47,24"

Seat Height: 85 cm | 33,46"

MATERIALS:

Lacquered Wood, Velvet Fabric and Polished Brass.

WEIGHT:

8 kg | 17,63 lbs

Also available in counter stool size.



Ellis

Bar Chair

Ellis Bar Chair was designed to be the highlight of any bar. This luxury statement piece has a mid-century design with a contemporary twist. Using a rich velvet upholstery, Ellis Bar Chair features a round shape on the back, exquisitely finished with a footrest framing the black lacquered legs.

DIMENSIONS:

W: 50 cm | 19,68" D: 46 cm | 18,11" H: 110 cm | 43,30'

Seat Height: 85 cm | 33,46"

MATERIALS:

Lacquered Wood, Velvet Fabric and Polished Brass.

WEIGHT:

8 kg | 17,63 lbs

Also available in counter stool size.



Ashby

Bar Chair

The Ashby Bar Chair is a portrayal of the mid-century vibe with bold shapes and patterns. This bar chair was thought to give a special touch to your dining room.

DIMENSIONS:

W: 41 cm | 16,14" D: 42 cm | 16,53" H: 104 cm | 40,94"

Seat Height: 85 cm | 33,46"

MATERIALS:

Lacquered Wood, Velvet Fabric and Polished Brass.

WEIGHT:

15 kg | 33,06 lbs

Also available in counter stool size.



Berry

Bar Chair

The Berry bar chair was designed to not go unnoticed in any mid-century ambiance. Inspired in the saxophonist Chu Berry, this bar chair brings us the best of the golden era. Upholstered with soft and rich velvet, the brass details of this bar chair will make it the star of any ambiance.

DIMENSIONS:

W: 50 cm | 19,68" D: 52 cm | 20,57" H: 111 cm | 43,70"

Seat Height: 85 cm | 33,46"

MATERIALS:

Velvet Fabric and Polished Brass.

WEIGHT:

13 kg | 28,66 lbs

Also available in counter stool size.



Betsy

Bar Chair

The Berry bar chair was designed to not go unnoticed in any mid-century ambiance. Inspired in the saxophonist Chu Berry, this bar chair brings us the best of the golden era. Upholstered with soft and rich velvet, the brass details of this bar chair will make it the star of any ambiance.

DIMENSIONS:

W: 50 cm | 19,68" D: 52 cm | 20,57" H: 111 cm | 43,70"

Seat Height: 85 cm | 33,46"

MATERIALS:

Velvet Fabric and Polished Brass.

WEIGHT:

13 kg | 28,66 lbs

Also available in counter stool size.



Ashby

Dining Chair

The Ashby Dining Chair is a portrayal of the mid-century vibe with bold shapes and patterns. This dining chair was thought to give a special touch to your dining room

DIMENSIONS:

W: 53 cm | 20,86" D: 50 cm | 19,68" H: 70 cm | 27,55"

Seat Height: 45 cm | 17,71"

MATERIALS:

Walnut Veneer, Velvet Fabric and Polished Brass.

WEIGHT:

15 kg | 33,06 lbs



Crawford

Dining Chair

The Crawford Dining Chair is a statement piece that will enhance any dining room. Inspired by the powerful actress and business woman Joan Crawford, this dining chair shows the elegance and glamour characteristic of that time

DIMENSIONS:

W: 60 cm | 23,62" D: 50 cm | 19,68" H: 70 cm | 27,55"

Seat Height: 45 cm | 17,71"

MATERIALS:

Walnut Veneer, Velvet Fabric and Polished Brass.

WEIGHT:

13 kg | 28,66 lbs



Jarman

Dining Chair

Joseph Jarman was the inspiration for this stunning dining chair, a famous jazz musician. Made with the noblest and elegant materials, the Jarman Dining Chair will be a showstopper in any project.

DIMENSIONS:

W: 48,5 cm | 19,09" D: 55,5 cm | 21,85" H: 75 cm | 29,52"

Seat Height: 45 cm | 17,71"

MATERIALS:

Walnut Veneer, Velvet Fabric and Polished Brass.

WEIGHT:

13 kg | 28,66 lbs



Miller

Armchair

Joseph Jarman was the inspiration for this stunning dining chair, a famous jazz musician. Made with the noblest and elegant materials, the Jarman Dining Chair will be a showstopper in any project.

DIMENSIONS:

W: 90 cm | 35,43" D: 84 cm | 33,07" H: 80 cm | 31,50"

Seat Height: 42 cm | 16, 53"

MATERIALS:

Walnut Veneer, Velvet Fabric and Polished Brass.

WEIGHT:

40 kg | 88,18 lbs



Handy

Armchair

This elegant and modern armchair was inspired in the saxophonist Craig Handy. Made to be the ideal complement to any mid-century ambience. The brass details gives this armchair a stylish and luxury look. It's available in several fabric options to be the perfect choice for any project.

DIMENSIONS:

W: 62 cm | 24,40" D: 62 cm | 24,40" H: 72 cm | 28,35"

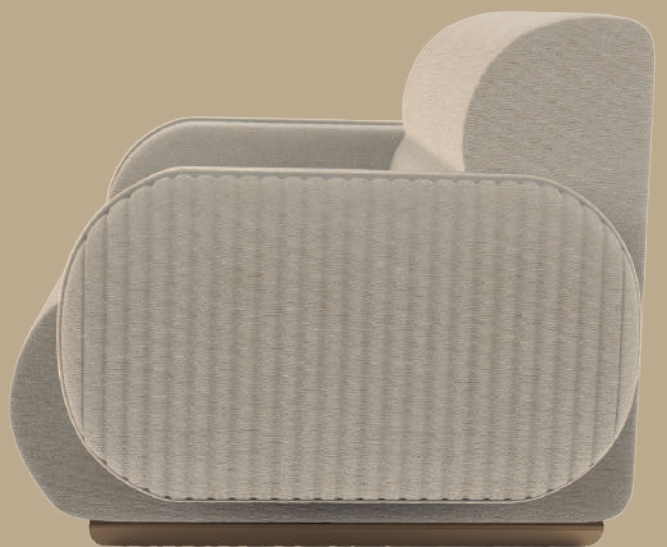
Seat Height: 42 cm | 16, 53"

MATERIALS:

Walnut Veneer, Velvet Fabric and Polished Brass.

WEIGHT:

45 kg | 99,21 lbs



Rollins

Single Sofa

Rollins is the perfect single sofa to fulfil your sophisticated mid-century project. The pattern design on the arms, combined with the brass base, made this sofa an elegant choice to be the spotlight in any living room.

DIMENSIONS:

W: 110 cm | 43,30" D: 100 cm | 39,37" H: 90 cm | 35,43"

Seat Height: 42 cm | 16, 53"

MATERIALS:

Velvet Fabric and Polished Brass.

WEIGHT:

50 kg | 110,23 lbs



Rollins

Sofa

Rollins is the perfect sofa to fit in any sophisticated mid-century project. The pattern design on the arms, combined with the brass base, made this sofa an elegant choice to be the spotlight in any living room.

DIMENSIONS:

W: 240 cm | 94,48" D: 87 cm | 34,25" H: 88 cm | 34,64"

Seat Height: 42 cm | 16, 53"

MATERIALS:

Velvet Fabric and Polished Brass.

WEIGHT:

160 kg | 352,73 lbs



Barlow

Sofa

The Barlow Sofa is a handmade upholstery piece with a textured velvet. The curved lines bend the legs in all its strength gracefully accentuated by rich polished brass details. The medley between the materials takes this sofa to a higher level.

DIMENSIONS:

W: 250 cm | 98,42" D: 90 cm | 35,43" H: 69 cm | 27,17"

Seat Height: 42 cm | 16, 53"

MATERIALS:

Velvet Fabric and Polished Brass.

WEIGHT:

150 kg | 330,69 lbs



Miller

Sofa

With the possibility to mix textures and patterns the Miller Sofa is the most desirable mid-century modern piece. Combining the retro style with modern contours this armchair is the perfect choice to enhance your project with a stylish look.

DIMENSIONS:

W: 200 cm | 78,74" D: 90 cm | 35,43" H: 80 cm | 31,50"

Seat Height: 42 cm | 16, 53"

MATERIALS:

Velvet Fabric, Lacquered Wood and Polished Brass.

WEIGHT:

180 kg | 396,86 lbs



Murray

Bookcase

Thought to give a pop of colour to the room, the Murray Bookcase is the perfect complement to any project. Made with lacquered wood and polished brass, this bookcase will give you the chance to play with the colour

DIMENSIONS:

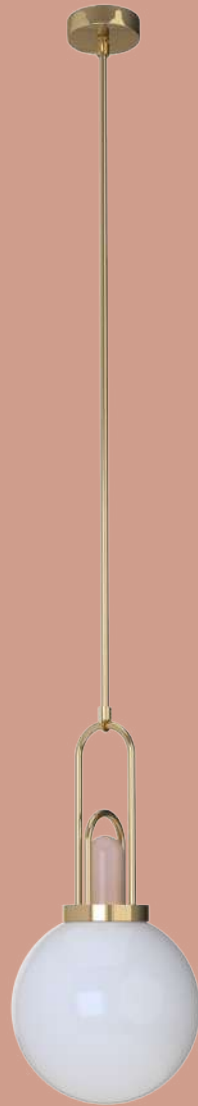
W: 300 cm | 118,11" D: 40 cm | 15,74" H: 220 cm | 86,61"

MATERIALS:

Walnut Veneer and Polished Brass.

WEIGHT:

120 kg | 264,55 lbs



Dash Pendant

Inspired in the simplicity of the midcentury lines, Dash pendant was created.

With a handmade arc made in brass and a metal colorful appointment, the Dash Pendant will enlight any ambiance.

DIMENSIONS:

Diam 75 cm | 29,52 H: 100 cm | 39,37"

Cord Height: Adjustable with 200 cm | 78,74"

MATERIALS:

Glass, Lacquered Wood and Polished Brass.

WEIGHT:

18 kg | 39,68 lbs

BULBS:

1 x g9 Halogen Bulbs (40W max) *USA not included

Voltage: 220-240V



Harper Pendant

The saxophonist Billy Harper was the inspiration for this pendant. Made in glass and brass, this pendant will bring luxury and opulence to any ambience. Perfect to fit any mid-century ambience, the Harper Pendant will take you back to the golden era.

DIMENSIONS:

Diam. 22 cm | 8,66" H: 114 cm | 44,89"
Cord Height: Adjustable with 200 cm | 78,74"

MATERIALS:

Glass, Lacquered Wood and Polished Brass.

WEIGHT:

18 kg | 39,68 lbs

BULBS:

1 x g9 Halogen Bulbs (40W max) *USA not included
Voltage: 220-240V



Gayle

Pendant

The Gayle Suspension was thought to take your hospitality projects into another level. Perfect to have above a beautiful counter or bar table, the Gayle Suspension will appeal the interest of any design lover.

DIMENSIONS:

Diam. 21 cm | 8,30" H: 110 cm | 43,31"
Cord Height: Adjustable with 200 cm | 78,74"

MATERIALS:

Glass and Polished Brass.

WEIGHT:

17 kg | 37,48 lbs

BULBS:

1 x g9 Halogen Bulbs (40W max) *USA not included
Voltage: 220-240V



Lockett

Suspension

The Lockett Suspension was thought to give a mid century vibe and transform the most bland counter into the trendiest one. Inspired by the acclaimed saxophonist Mornington Lockett, the golden era couldn't be represented in a better way.

DIMENSIONS:

W: 130 cm | 51,18" D: 50 cm | 19,68" H: 90 cm | 35,43"
Cord Height: Adjustable with 200 cm | 78,74"

MATERIALS:

Glass, Lacquered Wood and Polished Brass.

WEIGHT:

25 kg | 55,11 lbs

BULBS:

3 x g9 Halogen Bulbs (40W max) *USA not included
Voltage: 220-240V



Osby Suspension

Inspired by the talented saxophonist and composer Greg Osby, the Osby Suspension is an elegant lighting fixture that will be the star of any space. By combining lacquered wood materials with glass and brass details, this suspension represents the mid-century style in the most exquisite way.

DIMENSIONS:

W: 53 cm | 20,86" D: 53 cm | 20,86" H: 90 cm | 35,43"
Cord Height: Adjustable with 200 cm | 78,74"

MATERIALS:

Glass, Lacquered Wood and Polished Brass.

WEIGHT:

35 kg | 71,16 lbs

BULBS:

12 x g9 Halogen Bulbs (40W max) *USA not included
Voltage: 220-240V



Ayler Suspension

Getting as the inspiration the original saxophonist Albert Ayler, the Ayler Suspension is the pure representation of the mid century essence. With a stylish design, the Ayler Suspension will enhance the beauty of any room.

DIMENSIONS:

W: 80 cm | 31,49" D: 20 cm | 7,87" H: 100 cm | 39,37"
Cord Height: Adjustable with 200 cm | 78,74"

MATERIALS:

Glass and Polished Brass.

WEIGHT:

20 kg | 44,09 lbs

BULBS:

2 x g9 Halogen Bulbs (40W max) *USA not included
Voltage: 220-240V



Ayler II

Suspension

Inspired in the American avant-garde jazz saxophonist, the Ayler pendant belongs to the Ayler's family. Made in glass and brass, the Ayler Suspension is a mid-century suspension light, designed to be an object of desire that will bring uniqueness and elegance to any ambience.

DIMENSIONS:

W: 90 cm | 35,43" D: 20 cm | 7,87" H: 100 cm | 39,37"
Cord Height: Adjustable with 200 cm | 78,74"

MATERIALS:

Glass and Polished Brass.

WEIGHT:

20 kg | 44,09 lbs

BULBS:

2 x g9 Halogen Bulbs (40W max) *USA not included
Voltage: 220-240V



Ayler Wall

AYLER WALL

Inspired in the American avant-garde jazz saxophonist, the Ayler pendant is a lighting mid-century wall lamp that does not go unnoticed. Made in glass and brass, this elegant wall lamp will bring elegance to any ambience.

DIMENSIONS:

W 24 cm | 9,44" D 24 cm | 9,44" H 51 cm | 20,08"

MATERIALS:

Glass, Lacquered Wood and Polished Brass.

WEIGHT:

5 kg | 11,02 lbs

BULBS:

1 x g9 Halogen Bulbs (40W max) *USA not included
Voltage: 220-240V





www.mezzocollection.com