

sopha





Inviting. Especially for your ideas.



Sometimes, the workplaces that ensure the highest productivity are the ones that least look like work. This applies to the Sedus *sopha* range of upholstered furniture, the many modules of which offer possibilities of combination that hardly any other system does. As a result, *sopha* is predestined for nearly all kinds of use – from being a comfortable opportunity to relax in private, to serving as a landscape-forming location for communication in open-space areas. The attractive design and the high-quality materials do the rest to ensure that *sopha* cuts a good figure in all office areas.

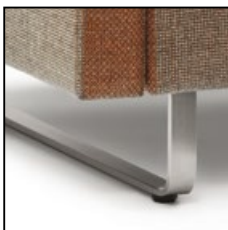
For the eye and for results.

Design that points the way. The elegant stitching and the basic body with clearly defined side elements underline *sopha's* high-quality attractive contours. In addition, *sopha* fits in with any ambient colour scheme or stands out alone as a stylistic feature that attracts the eye. This is thanks to the optional two-tone upholstery,

for example, or the side elements that can be supplied in a different colour. However, the fact that *sopha* not only flatters the eye but also offers a place for temporary working is shown by the accessories such as the power-supply adapter or the functional middle cushion.



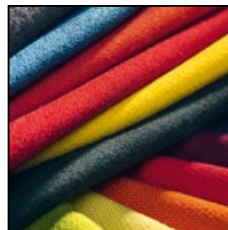
Style setting. The stitching, which helps to give *sopha* its own particular character, underlines the attractive design.



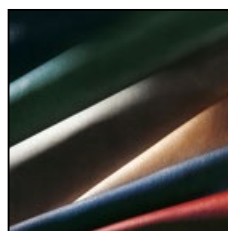
Standpoint. Narrow aluminium legs with slides or, on request, with brushed stainless-steel skids emphasises the striking appearance.

Form and function.

The unattached middle cushion can be positioned as required to serve as an armrest or somewhere on which to place a notebook or tablet. It also improves sitting comfort and, in the colour-contrasting version, is an additional feature that catches the eye.



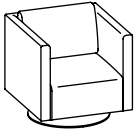
Well-dressed. In addition to twenty different colours of the high-quality woollen-material collection "Fame", it is possible to choose from thirteen leather colours and imitation leather while the colour ranges "Crêpe", "Gaja" and "Remix" offer additional choices. The especially homely collection "Craggan" and the fire-inhibiting "Class" collection are further options.



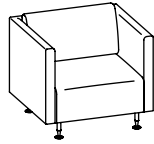
Sedus *sopha* power supply. Power where it is needed: on request, with three power sockets or with two plus USB chargers, each with an integrated approximately 3-metre-long mains cable.

Style with system.

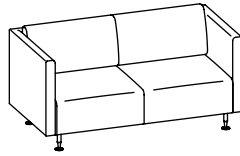
Complete models. Height 850 mm, depth 800 mm.



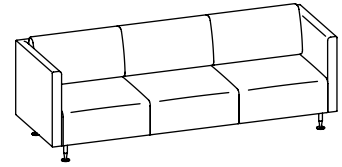
Club chair on turntable



Armchair

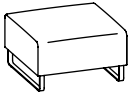


Two-seater

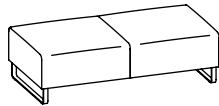


Three-seater

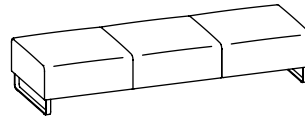
Base elements. Height 430 mm, depth 720 mm.



Low stool



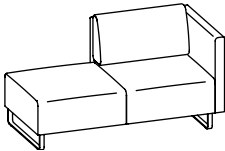
2-seater bench



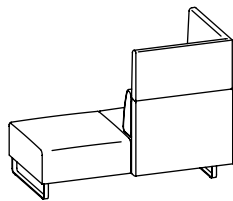
3-seater bench

Combinations. Height 400/600 mm, depth 800 mm.

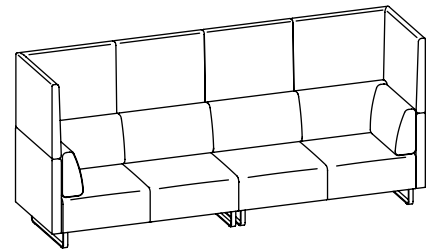
Base elements, corners/extensions, back cushions and side/back elements with heights of 400 mm and 600 mm make a wide variety of widths possible.



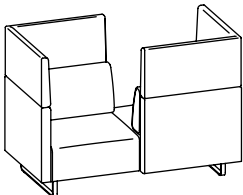
2-seater bench with corner elements and back cushion



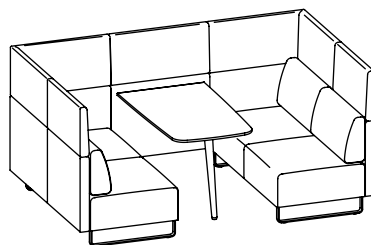
2-seater bench with corner elements, back cushion and height-increasing extensions



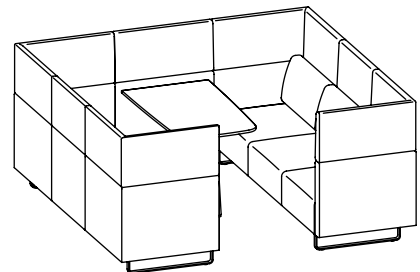
2x2-seater with add-on backrests and height extensions as well as back cushions



2-seater combination with opposing corners and back cushions



4-seater working or meeting "island" with back cushions, open on one side



6-seater working or meeting "island" with back cushions, closed-off at the sides



Looking for a quiet corner to dream up new ideas?

It is not just a gut instinct: scientific studies have shown that people are especially creative when they feel at ease. A relaxed working atmosphere such as offered by *sopha* can make a decisive contribution in this regard. *sopha* is therefore much more than a piece of furniture; it is a place of ideas – especially for companies that depend on innovations.

As a comfortable and homely working “island”, *sopha* enables spontaneous withdrawal from the bustle of the office as well as concentrated working or small-group meetings. In other words, *sopha* used in offices promotes exactly the stimulating atmosphere that is so important for intellectual productivity and the constructive exchange of ideas.



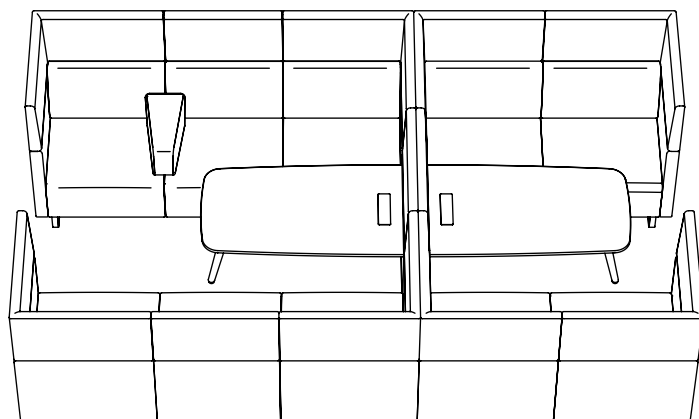
Clever. As an option, *sopha* can be equipped with an induction charger for smartphones.



Connected. The Power Frame, which can be directly integrated into the desk top on request, enables easy access to power and networks.



High-quality variety. The meeting tables can be fitted with all the table tops from the Sedus surface collection.



Stimulating. Working and meeting “islands” with four or six seats promote direct communication – the version which is closed at the sides offers all-round privacy.

Sedus sofa: A plea in favour of face-to-face interaction.

Everyone is talking about online communication. But do we also directly talk to each other enough? Talking face-to-face is still the most important and efficient method of communication. Sedus *sopha* was developed exactly for this purpose and supports the exchange of information and ideas in all office areas, including the prestige reception area. Especially here, by the way, the *sopha* club armchair with tu rntable is an excellent addition. Like all *sopha* modules, it convinces as a result of its comfortable and ergonomic design, which is particularly beneficial during long meetings. In a nutshell: people like to sit here to discuss important matters.



Feeling good. The occasional tables can be used to put things on and make middle zones or reception areas homely.





Team work. Sedus
sweetspot side table,
sweetspot lounge table
and sweetspot low table
 round off the *sopha* range
 perfectly.



Sustainability down to the smallest detail.

Sustainability and “Made in Germany” quality are among the central corporate principles that Sedus has adhered to for more than 50 years. Principles that the Sedus *sopha* also embraces and that reflect recycling-oriented product design, ecologically tested materials, resource-sparing and energy-conscious manufacturing and permanent quality tests.

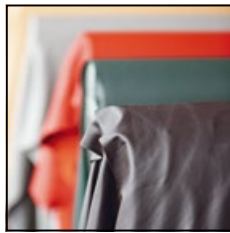
The *sopha* furniture range is therefore made exclusively in Germany, thus guaranteeing adherence to the highest environmental standards. This is made clear by our use of dyed semi-aniline leather, for example, whereby, because the amount of dye used is intentionally restricted, the pores are left open and allowed to “breathe”. In addition, the *sopha* tables combine seamless edges, robustness and attractiveness as well as being environmentally friendly.

You will find more information at www.sedus.com/en/ecology



Fabrics that last.

Our fabrics must display certain qualities even before they are made into covers. For example, tear strength, resistance to chemicals and lightfastness.



Leather from local sources.

The leather we use comes from southern Germany. This guarantees maximum quality and ensures short, environmentally-friendly transportation distances.



Chrome, environment-friendly and attractive.

For perfect chrome surfaces, Sedus has its own water treatment equipment, which removes product residue from the water.

Around the world, Sedus adheres to the principles of the UN Global Compact for human rights, labour standards, the environment and anti-corruption.

Company:



Sedus *sopha*:



