

# Hive

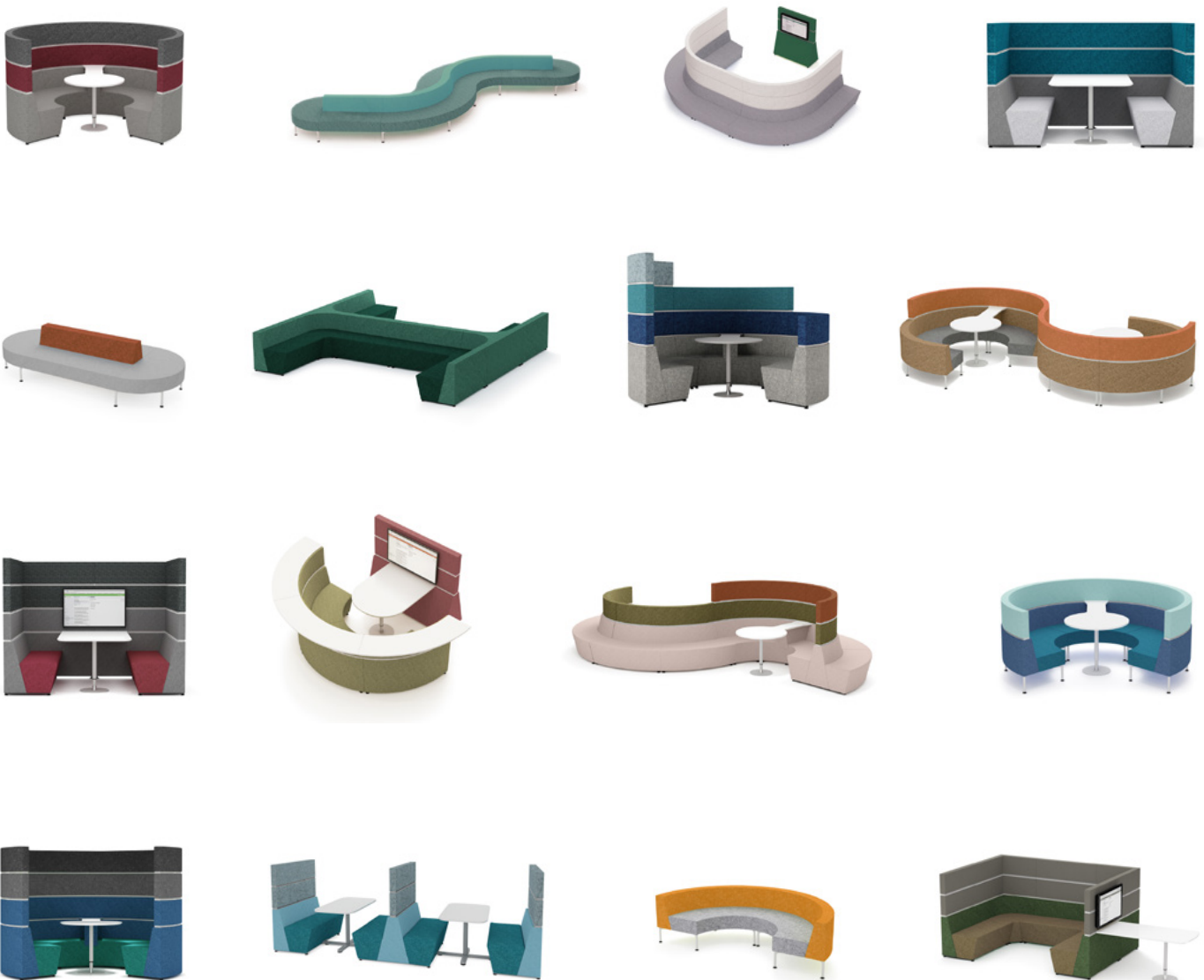
Product Brochure



# Hive

Design by Roger Webb Associates

The Hive range is a modular furniture collection which facilitates a multitude of ways to work via the creation of configurable and connected spaces. An innovative modular system designed to enable spaces to flex and adapt using easy to assemble modules to configure different shapes, making every space unique to the needs of the environment. Available with integrated technology including power modules and WiFi.



# Hive



# Hive

## Statement modular furniture

### Product Information

- Hive is based around 4 modular components: backs, benches, screens and work rails. These modules can be curved or straight and are available in a choice of widths; with or without legs
- Power modules and data points can be integrated into a number of accessible positions
- Fixed or freestanding TV's and displays can be accommodated in a variety of configurations
- Integral work surfaces and tables optional. Work surfaces are available in black, white or oak
- Available in a wide range of fabrics, vinyls and leathers (restrictions apply)
- White or natura work rails and leg finishes



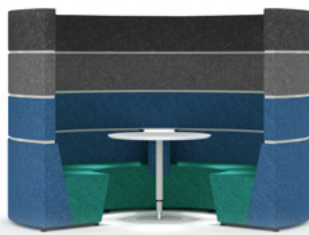
**Configuration:** HIVECONFIG01  
**Description:** 90° modular pod, 2 screens high with pod table

Dimensions	
Height	1,443mm
Width	2,600mm
Weight	306kg



**Configuration:** HIVECONFIG14  
**Description:** Rectangular pod, 2 screens high, with integrated rectangular pod table

Dimensions	
Height	1,443mm
Width	2,400mm
Depth	1,700mm



**Configuration:** HIVECONFIG24  
**Description:** 90° modular pod & pod table

Dimensions	
Height	1,808mm
Width	2,600mm
Weight	345kg



**Configuration:** HIVECONFIG15  
**Description:** Rectangular pod, 3 screens high, with integrated rectangular pod table

Dimensions	
Height	1,808mm
Width	2,400mm
Depth	1,700mm



**Configuration:** HIVECONFIG22  
**Description:** 90° modular stepped pod with pod table

Dimensions	
Height	1,808mm
Width	2,600mm
Weight	284kg



**Configuration:** HIVECONFIG25  
**Description:** 1,200mm booth with integral table

Dimensions	
Height	1,443mm
Width	2,120mm
Depth	1,200mm
Weight	127kg



**Configuration:** HIVECONFIG19  
**Description:** 90° modular pod on legs with pod table

Dimensions	
Height	1,078mm
Width	2,600mm
Weight	178kg



**Configuration:** HIVECONFIG23  
**Description:** 1,200mm double booth with integral table

Dimensions	
Height	1,443mm
Width	4,140mm
Depth	1,200mm
Weight	205kg

Work rail



Leg



Work surface

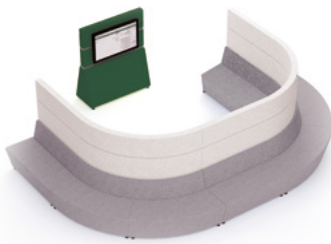


# Hive

## Statement modular furniture

### Product Information

- Hive is based around 4 modular components: backs, benches, screens and work rails. These modules can be curved or straight and are available in a choice of widths; with or without legs
- Power modules and data points can be integrated into a number of accessible positions
- Fixed or freestanding TV's and displays can be accommodated in a variety of configurations
- Integral work surfaces and tables optional. Work surfaces are available in black, white or oak
- Available in a wide range of fabrics, vinyls and leathers (restrictions apply)
- White or natura work rails and leg finishes



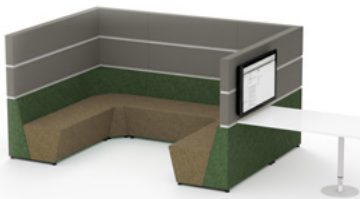
**Configuration:** HIVECONFIG02  
**Description:** Curved U-shape with free-standing media screen

<b>Dimensions</b>	
<b>Height</b>	1,443mm
<b>Width</b>	2,600mm
<b>Depth</b>	3,900mm
<b>Weight</b>	437kg



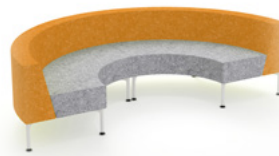
**Configuration:** HIVECONFIG05  
**Description:** H-shape with internal benches

<b>Dimensions</b>	
<b>Height</b>	713mm
<b>Width</b>	4,800mm
<b>Depth</b>	3,876mm
<b>Weight</b>	293kg



**Configuration:** HIVECONFIG03  
**Description:** Square U-shape with integral media screen & cantilever table

<b>Dimensions</b>	
<b>Height</b>	1,443mm
<b>Width</b>	4,300mm
<b>Depth</b>	2,000mm
<b>Weight</b>	355kg



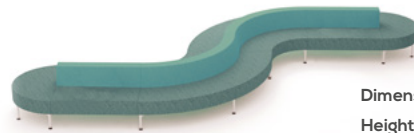
**Configuration:** HIVECONFIG17  
**Description:** C-shape on legs

<b>Dimensions</b>	
<b>Height</b>	713mm
<b>Width</b>	2,600mm
<b>Depth</b>	1,300mm
<b>Weight</b>	124kg



**Configuration:** HIVECONFIG09 (with media unit), HIVECONFIG10 (without media unit)  
**Description:** Auditorium unit with freestanding media unit & cantilever table

<b>Dimensions</b>	
<b>Height</b>	1,078mm 1,078mm
<b>Width</b>	3,200mm 3,200mm
<b>Depth</b>	3,320mm w/ media unit 1,500mm no media unit
<b>Weight</b>	408kg 324kg



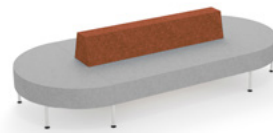
**Configuration:** HIVECONFIG18  
**Description:** S-shape on legs

<b>Dimensions</b>	
<b>Height</b>	713mm
<b>Width</b>	3,800mm
<b>Depth</b>	4,300mm
<b>Weight</b>	448kg



**Configuration:** HIVECONFIG12  
**Description:** S-shape with dual sided benches & pod table

<b>Dimensions</b>	
<b>Height</b>	1,443mm
<b>Width</b>	4,400mm
<b>Depth</b>	3,800mm
<b>Weight</b>	313kg



**Configuration:** HIVECONFIG20  
**Description:** Island unit on legs

<b>Dimensions</b>	
<b>Height</b>	713mm
<b>Width</b>	2,920mm
<b>Depth</b>	1,315mm
<b>Weight</b>	152kg



**Configuration:** HIVECONFIG16  
**Description:** 8-shape with pod tables on legs

<b>Dimensions</b>	
<b>Height</b>	1,078mm
<b>Width</b>	5,100mm
<b>Depth</b>	2,600mm
<b>Weight</b>	565kg

# Hive



SPACE  
THAT

CO-WORKING



Meet

create

collaborate



eat

SO

# Hive



Integrated power options



TV bracket



Natura or white workrails



Black or polished aluminium legs



Freestanding tables



Integrated tables

# Hive





# Hive

**Case Study:** Hive pods with outside benches used to striking effect in Mail.ru's headquarters in Russia



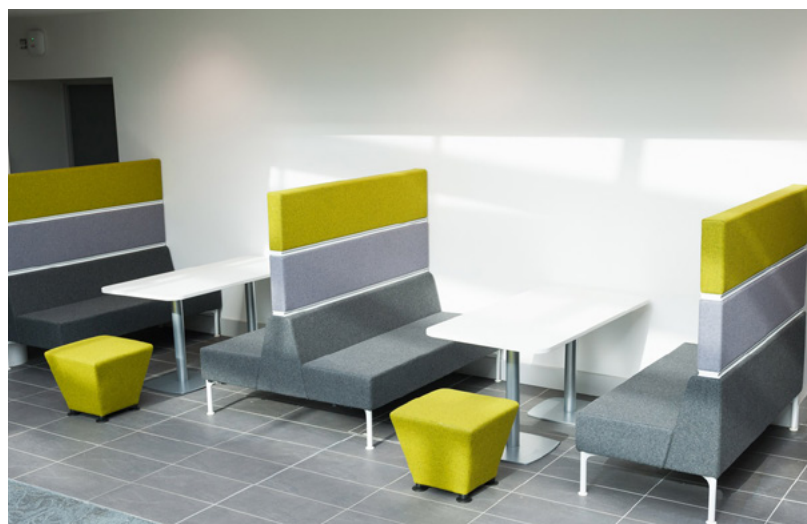
# Hive

**Case Study:** Hive creating a Hive with integrated table in the reception space at Node 4's Nottingham office



# Hive

**Case Study:** Hive with legs in a variety of configurations was used throughout Sheffield Hallam University's 'Heart of the Campus' building.



**Head Office & Showroom**

Dogley Mills,  
Penistone Road,  
Huddersfield,  
West Yorkshire,  
HD8 0LE

Tel: 01484 600 100  
[sales@connection.uk.com](mailto:sales@connection.uk.com)

**London Showroom**

31 Great Sutton Street,  
Clerkenwell,  
London,  
EC1V 0NA

Tel: 020 7253 9877  
[www.connection.uk.com](http://www.connection.uk.com)

**Manchester Showroom**

The Old Law Library,  
Kennedy Street,  
Manchester,  
M2 4BY